



# 乐清市乐宇自动化电气有限公司 Yueqing Leyu Electric Automation Co., Ltd.

## 60W Single Output Industrial DIN Rail Power Supply

DR-60 series

Features:

Universal AC input/ full range

Protections: Short circuit/ Over load/ Over voltage

Cooling by free air convection

Can be installed on DIN rail TS-35/7.5 or 15

solation class II

LED indicator for power on

100% full load burn-in test

1 year warranty

### SPECIFICATIONS

OUTPUT				
Model	DR-60-5	DR-60-12	DR-60-15	DR-60-24
DC Voltage	5V	12V	15V	24V
Rated Current	6.5A	4.5A	4A	2.5A
Current Range	0-6.5A	0-4.5A	0-4A	0-2.5A
Rated Power	32.5W	54W	60W	60W
Ripple & Noise	80mVp-p	120mVp-p	120mVp-p	150mVp-p
Voltage Adj. Range	-5%,+10%	-8%,+10%	±10%	±10%
Voltage Tolerance	±2%	±1%	±1%	±1%
Setup, Rise Time	100ms,30ms/230VAC    200ms,30ms/115VAC at full load			
Hold Up Time	100ms/230VAC    23ms/115VAC at full load			
INPUT				
Voltage Range	88~264VAC    47~63Hz; 124~370VDC			
AC Current	1.2A/115V    0.8A/ 230V			
Efficiency	76%	82%	83%	84%
Inrush Current	Cold start 18A/115V    36A/230V			
Leakage Current	<1mA/240VAC			
PROTECTION				
Over Load	105%~160%			
	Protection type: Constant current limiting, recovers automatically after fault condition is removed			
Over Voltage	115%~135%			
	Protection type: Shut down o/p voltage, re-power on to recover			
ENVIRONMENT				



# 乐清市乐宇自动化电气有限公司

## Yueqing Leyu Electric Automation Co., Ltd.

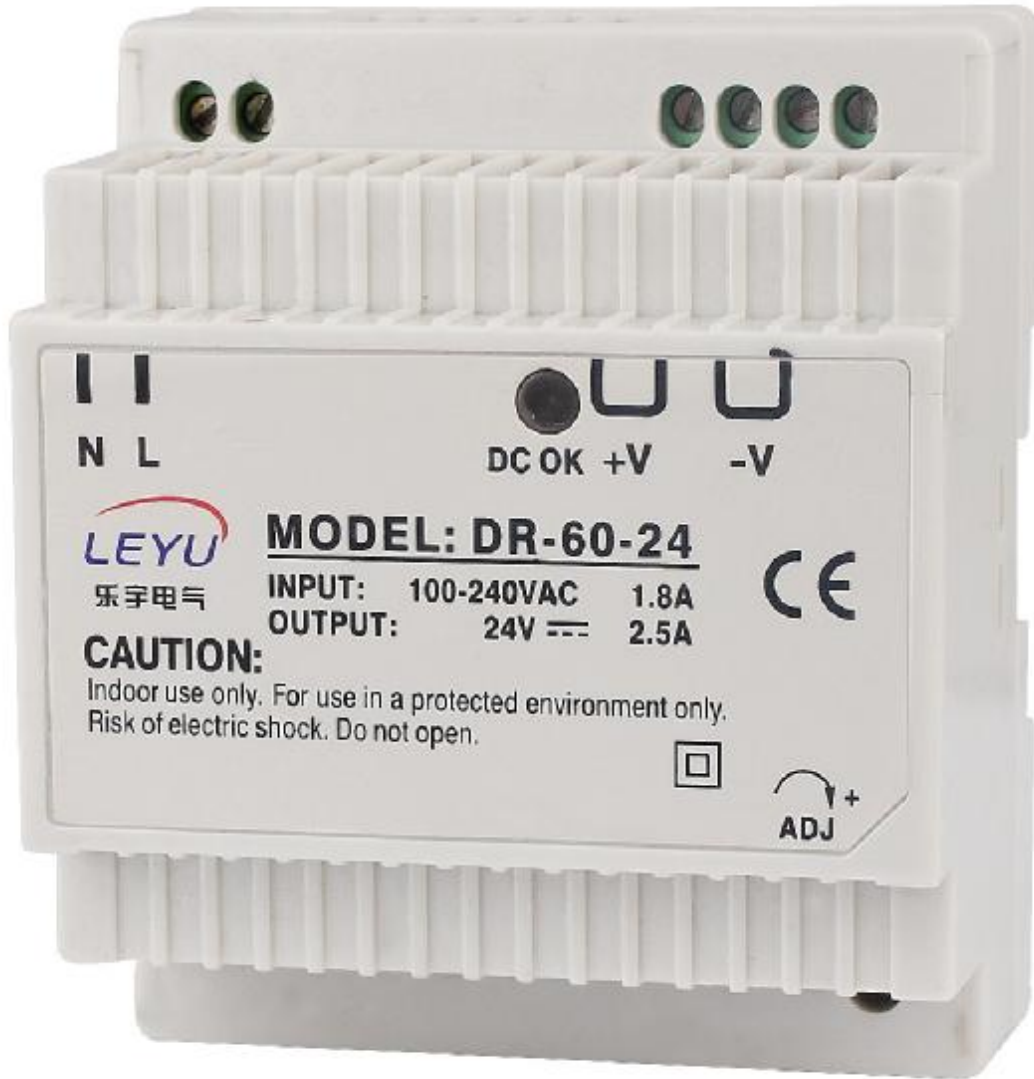
Working Temp., Humidity	-20°C~+60°C; 20%~90%RH
Storage Temp., Humidity	-40°C~+85°C; 10%~95%RH
Temp. Coefficient	±0.03%/°C(0~50°C)
Vibration	10~500Hz, 2G 10min./1cycle, period for 60min, each along X, Y, Z axes
SAFETY	
Withstand Voltage	I/P-O/P: 3KVAC
Isolation Resistance	I/P-O/P: 100M Ohms / 500VDC
STANDARD	
Safety Standard	Design refer to UL60950-1,TUV EN60950-1,EN50178
EMC Standard	Design refer to EN55011,EN55022,EN61000-3-2,-3,EN61000-4-2,3,4,5,6,8,11,ENV50204,EN55024,EN61000-6-2, EN61204-3
OTHERS	
Dimension	78*93*56mm(L*W*H)
Weight	0.3Kg
Packing	48pcs/15.4Kg/1.02CUFT
NOTE	
1.All parameters NOT specially mentioned are measured at 230VAC input, rated load and 25 °C of ambient temperature.	
2.Ripple & noise are measured at 20MHz of bandwidth by using a 12" twisted pair-wire terminated with a 0.1μ & 47μ parallel capacitor.	
3.Tolerance: includes set up tolerance, line regulation and load regulation.	
4.The power supply is considered a component which will be installed into a final equipment. The final equipment must be re-confirmed that it still meets EMC directives.	



®

乐清市乐宇自动化电气有限公司

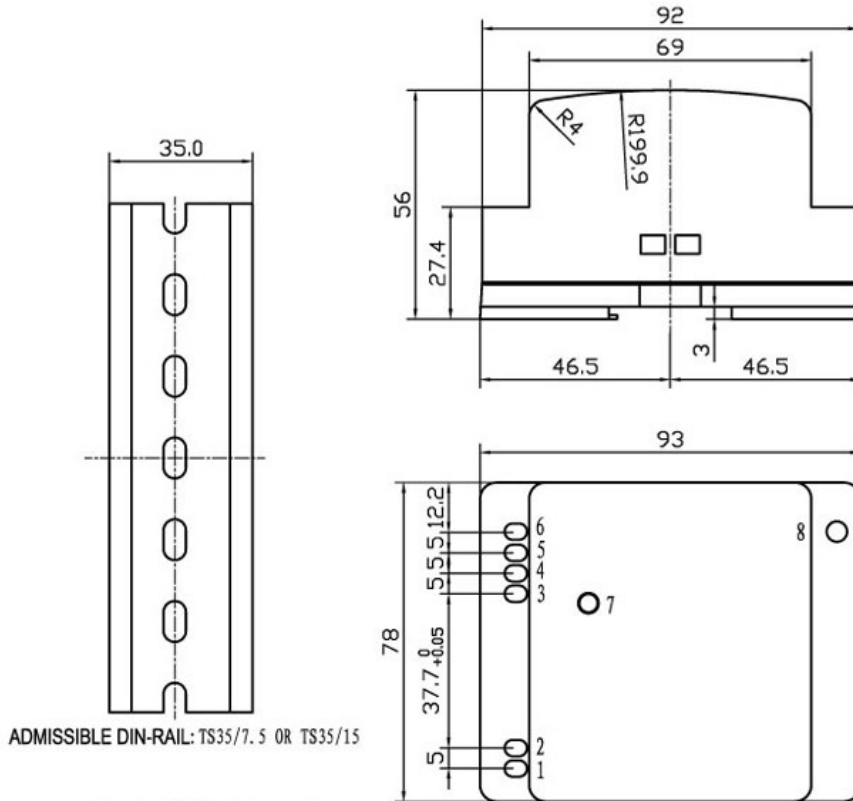
Yueqing Leyu Electric Automation Co., Ltd.



60W Single Output Industrial DIN Rail Power Supply

**DR-60 Series**

■ Outline and Dimension:



Terminal Pin No. Assignment:

Pin No.	Assignment	Pin No.	Assignment
1	AC/N	5, 6	-V
2	AC/L	7	LED
3, 4	+V	8	+V ADJ.

■ Output Derating

